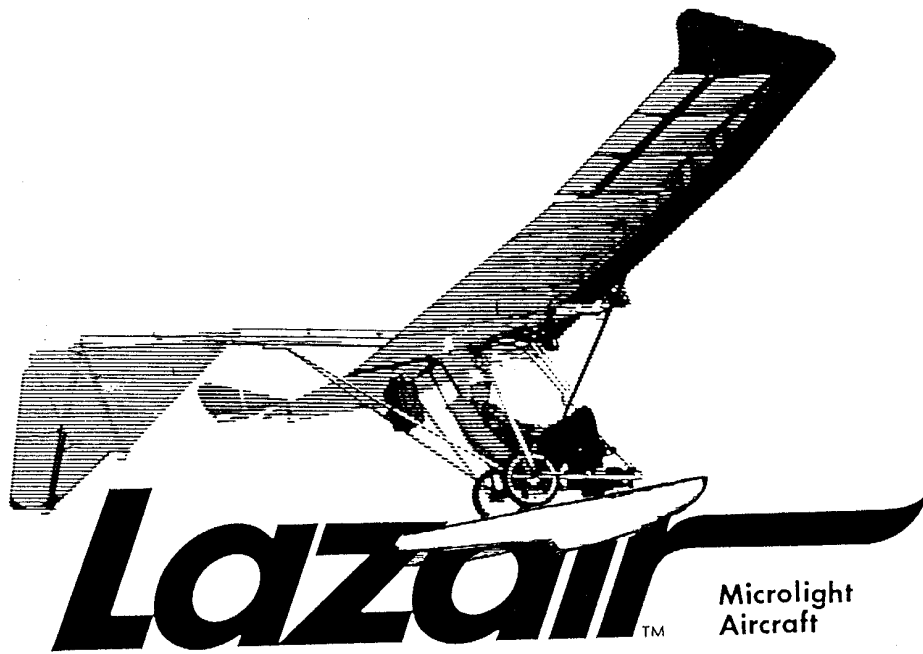


Report No. 81017

Revised December 1981



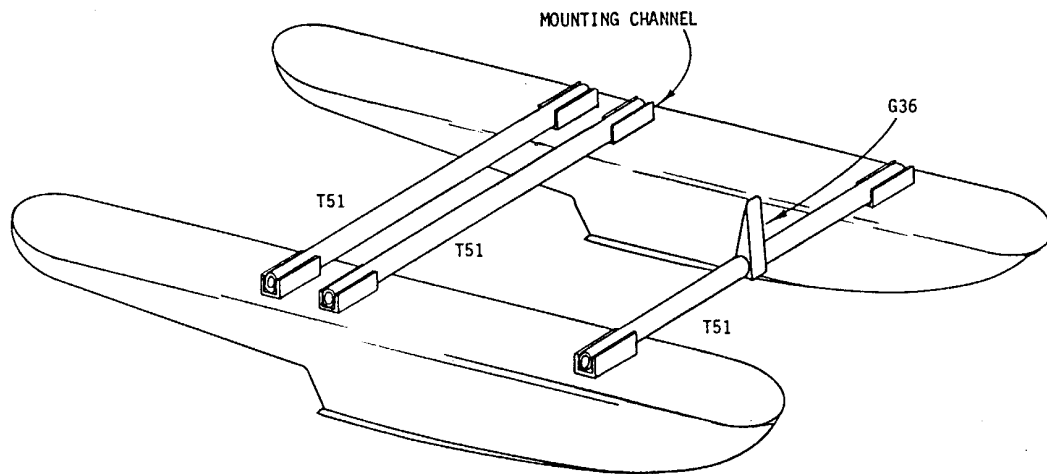
FLOAT ASSEMBLY MANUAL



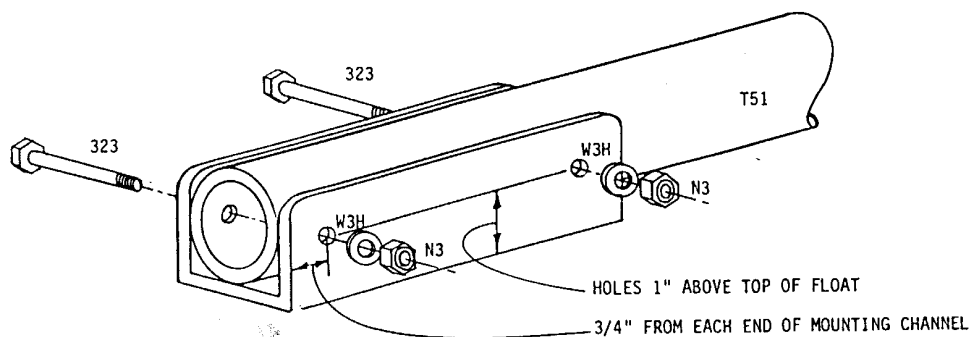
ULTRAFLIGHT MANUFACTURING LIMITED

1.0 FLOAT ASSEMBLY

- 1.1 Position the floats approximately four feet apart on a flat working surface.
- 1.2 Slide the front mounting bracket (G36) onto one of the float mounting tubes (T51) and lay the tube into the front mounting channels on the floats. *Note that the open side of G36 faces the rear of the floats.* Set the remaining two tubes into the rear mounting channels as shown.

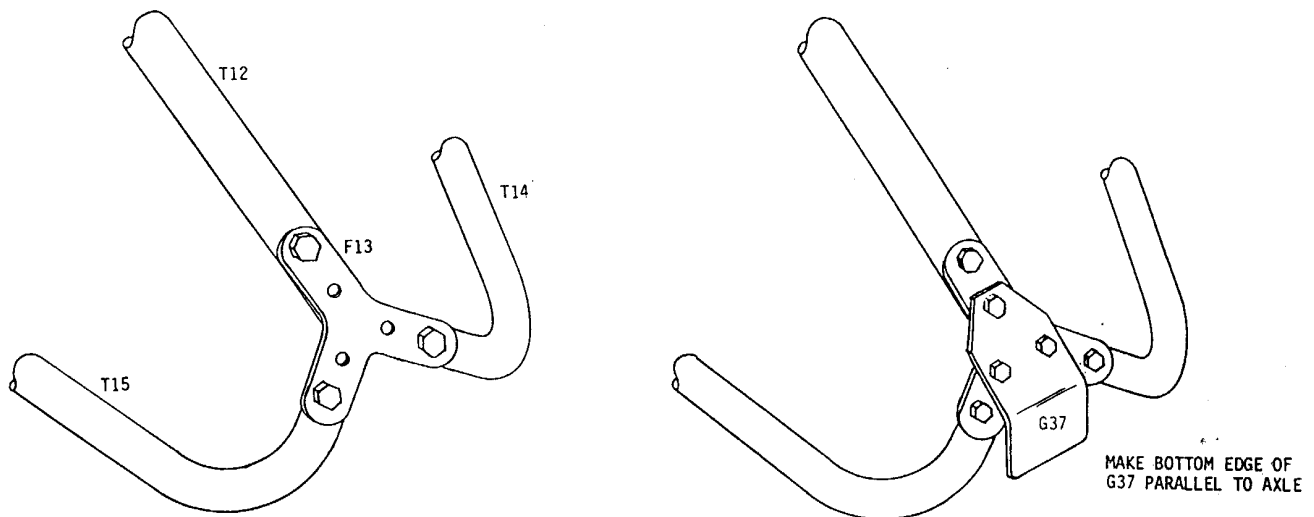


- 1.3 Position the floats so that the ends of *all* the tubes are flush with the ends of the mounting channels. Drill 3/16 inch holes and bolt the tubes to the mounting channels as shown. Be sure to press the tubes firmly into the channels while drilling the holes.

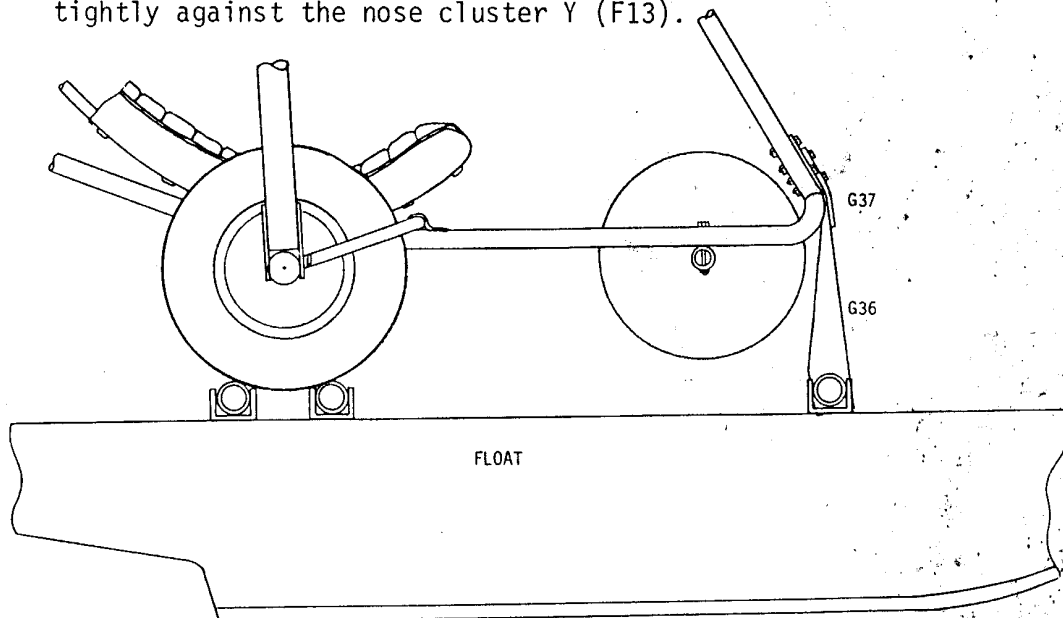


2.0 FLOAT INSTALLATION

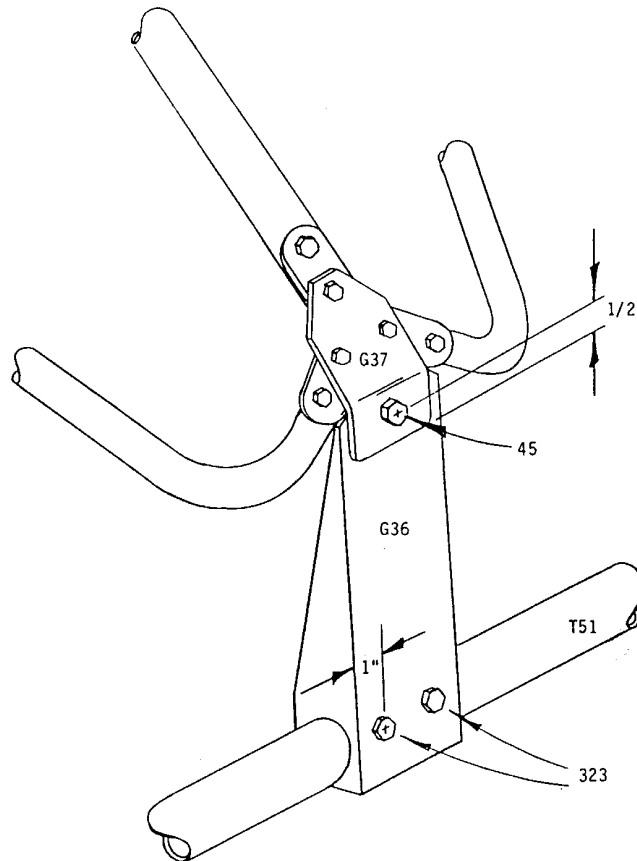
- 2.1 Remove the inner three bolts from the nose cluster on the aircraft as shown. Using one bolt through the upper hole, locate the front float attach fitting G37 and mark and drill the two remaining holes in G37. Bolt G37 in place as shown using the existing three 314 bolts.



- 2.2 With the aid of a friend, lift the aircraft onto the floats with the main gear resting on the two rear float mounting tubes and the top of G36 under the G37. The top of G36 should fit tightly against the nose cluster Y (F13).

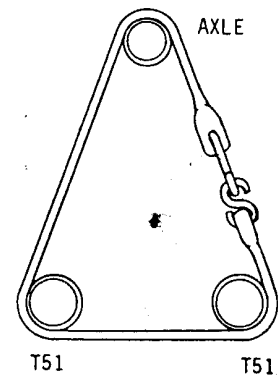


- 2.3 Drill a 1/4 inch hole and bolt the G36 to the G37 as shown. Put the hole 1/2 inch up from the bottom of the G37.



- 2.4 Drill two 3/16 inch holes and bolt the G36 to the front T51 as shown above. Put the holes on the centre line of the tube and 1 inch in from the sides of the G36. Make sure G36 is centred on the T51.

- 2.5 Secure the aircraft to the rear float mounting tubes with a total of four rubber straps (one on each side of each wheel). The straps should be looped around the axle and both rear float mounting tubes and securely hooked together.



2.6 To remove the floats from the aircraft, remove the four rubber straps and the 45 bolt which holds the G36 to the G37. Leave the G37 permanently attached to the aircraft.

NOTE: If you intend to remove the float mounting tubes at any time, don't forget to indent both the tubes and the floats so they can be matched and the holes will be properly aligned when they are reassembled.